

HYDRAULIC SCISSOR LIFT

UNI LIFT NT

HYDRAULIC FLEXIBILITY

WITH
TECHNOLOGY



**360°
Access**



THE PRECISE MULTI-TASKING HYDRAULIC SCISSOR LIFT

- ✓ Hydraulic synchronization of scissors
- ✓ Reliable wheel alignment
- ✓ Covers most of the activities in your workshop

3500 KG | 5500 KG

HYDRAULIC SCISSOR LIFT

UNI LIFT NT

Functionality and Technology

A flexible scissor lift, suitable for a large range of tasks: Diagnostics, wheel alignment, testing, repairs, changing tires (with optional WHEEL FREE LIFT). Several versions are available so you can customize your lift to your specific needs.

Long-lasting and safe, it features the best hydraulic technology on the market: the NT hydraulic system by NUSSBAUM.

Technical overview

- ✓ Low runways with short access ramps save space
- ✓ Redundant hydraulic system with two independent hydraulic circuits
- ✓ Powerful, quiet and long lasting oil-submerged motor
- ✓ No fixed connection between the runways
- ✓ Can be installed either mounted on surface or floor flush
- ✓ Fast lifting and lowering times



VERSIONS

AMS – Wheel Alignment Set

Installation of rear sliding plates, front recesses for turntables and mechanical locking system.

PLUS – Wheel-free lift

Wheel-free scissor lift with adjustable lifting platforms and polymer pads.

PLUS AMS – Wheel-free lift and wheel alignment set

Wheel alignment set and wheel-free lift are aligned at one level, giving you completely flat and even ramps.

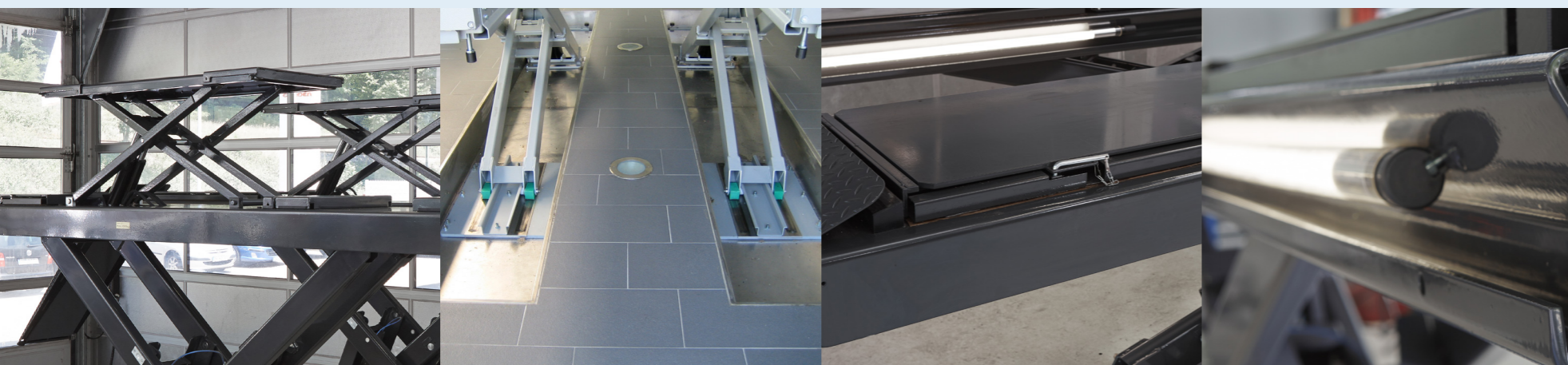
- ✓ **2 possible types of installation:**
above ground or in-ground

- ✓ **3 different surface treatments:**
Powder coated, fire galvanized or Oxygen care

FREE ACCESS ALL AROUND

Ideal for the adjustment of driver assistance systems

UNI LIFT NT 3500 AND 5000: THE FLEXIBLE SCISSOR LIFT



PLUS AMS VERSION (above ground installation): with wheel free lift + wheel alignment set + optional Axle Jack

Optional in-ground installation

AMS and PLUS AMS with rear sliding plates

LED or fluorescent lighting tubes available

YOUR UNIQUE ADVANTAGES

- Always precise, ideal for testing and wheel alignment
- Many options and accessories available
- Quality hydraulics made by NUSSBAUM in Germany
- NT technology by NUSSBAUM



FLEXIBLE AND RELIABLE

UNI LIFT NT	3500	5000
Lifting capacity (kg)	3500	5500*
Lifting/lowering time approx. (sec)	35/29	35/29
Lifting height (mm)	1920	1920
Lifting height with flat-plates/AMS (mm)	1970	1970
Drive-on height platform (mm)	195	195
Drive-on height platform with flat-plates/AMS (mm)	245	245
Runway width (mm)	635	635
Runway length (mm)	4500/4700	5000/5200
Total width (mm)	2120	2120
Total length over floor (mm)	6155/6355	6655/6855
WHEEL FREE LIFT	3500	5000
Lifting capacity wheel free lift (kg)	3500	3500
Lifting time wheel free lift (sec)	15	15
Lifting height wheel free lift (mm)	580	580
Platform length wheel free lift (mm)	1485-1945	1485-1945
Power supply (V/Hz)	400/50	400/50
Motor (kW)	3,0	3,0

***Please note:** With the WHEEL FREE LIFT installed, the overall lifting capacity of the UNI LIFT NT 5000 is reduced to 5000 kg

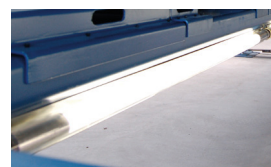
ACCESSORIES



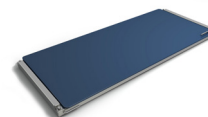
JAX 2000/2600



JAX 4000



Lighting 4 or 6 tubes, fluorescent or LED



Sliding plate for alignment



Play detector with remote control

More accessories available